

RESOLUTION 91-57

RESOLUTION OF THE BOARD OF COUNTY COMMISSIONERS, NASSAU COUNTY, FLORIDA, APPROVING A MINOR DEVIATION TO THE APPROVED FINAL DEVELOPMENT PLAN FOR PARCEL G OF THE DUNES CLUB PUD-DRI AND THE REPLAT OF DUNES ROW SUBDIVISION

WHEREAS, THE BOARD OF COUNTY COMMISSIONERS, pursuant to RESOLUTION 85-32, approved an application for development approval for Dunes Club, Amelia Island South, and

WHEREAS, THE BOARD OF COUNTY COMMISSIONERS, in Resolutions 85-34; 85-38; 85-41 have amended Resolution 85-32, and

WHEREAS, the Developer of the Dunes Row/Dunes Club Development has requested a minor deviation to the Final Development Plan and the replat of Dunes Row Subdivision to allow a modification to the rear yard building restriction on lots 1 and 2 only, and

WHEREAS, the Planning and Zoning Board have recommended approval to the Final development Plan and to the replat,

NOW, THEREFORE, BE IT RESOLVED THIS 25th DAY OF FEBRUARY, 1991, THAT:

1. The minor deviation is hereby approved as set forth in the attached "Exhibit A".

2. This Resolution and the attached "Exhibit A" shall be made a part of the final development plan for Parcel G of the Dunes Club PUD-DRI.

PASSED AND ADOPTED this 25th day of February, 1991.

THE BOARD OF COUNTY COMMISSIONERS
OF NASSAU COUNTY, FLORIDA

BY: *Jim B. Higginbotham*
JIM B. HIGGINBOTHAM, CHAIRMAN

ATTEST:

T. J. Greeson

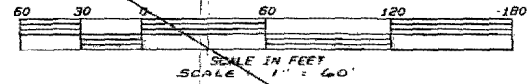
T. J. GREESON, CLERK

EXHIBIT "A"

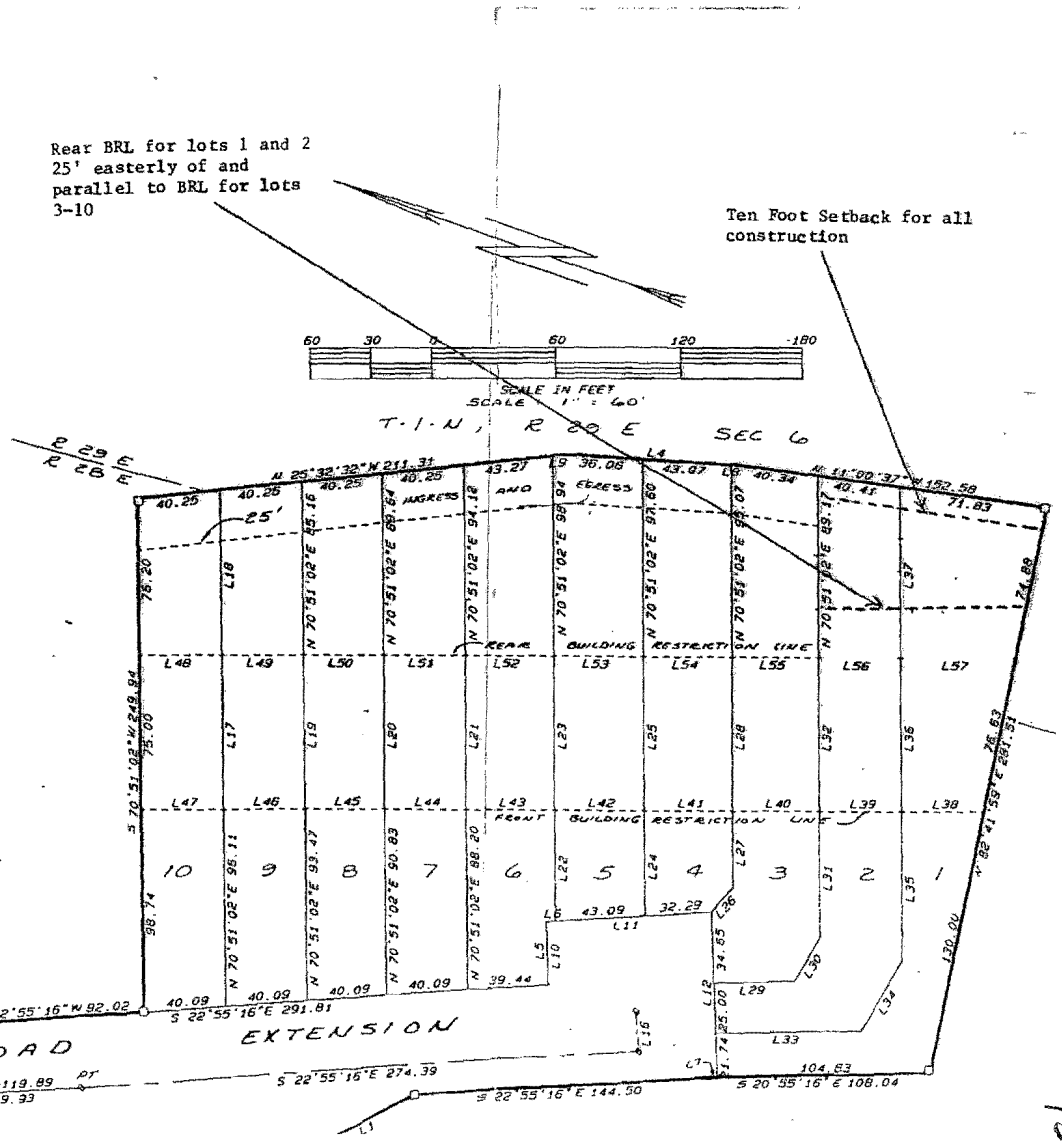
39 46 E	37.37
02'03"E	13.00
04'44"E	20.00
51'02"E	75.00
51'02"E	80.68
51'02"E	75.00
51'02"E	75.00
51'02"E	75.00
51'02"E	54.07
51'02"E	75.00
51'02"E	51.24
51'02"E	75.00
05'13"E	15.10
51'02"E	37.16
51'02"E	75.00
55'16"E	40.44
05'14"E	24.54
51'02"E	61.26
51'02"E	75.00
55'16"E	72.00
05'14"E	39.87
51'02"E	72.00
51'02"E	75.00
51'02"E	83.45
08'58"W	40.00
08'58"W	40.00
08'58"W	43.00
08'58"W	43.00
08'58"W	43.00
08'58"W	40.00
08'58"W	40.00
08'58"W	40.00
08'58"W	40.00
08'58"W	40.00
08'58"W	40.00
08'58"E	40.00
08'58"E	40.00
08'58"E	43.00
08'58"E	43.00
08'58"E	43.00
08'58"E	40.00
08'58"E	55.74

Rear BRL for lots 1 and 2
25' easterly of and
parallel to BRL for lots
3-10

Ten Foot Setback for all
construction



T-1-N, R 28 E, SEC. 1



758